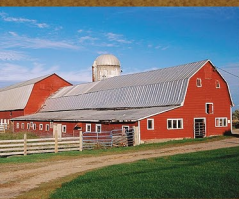
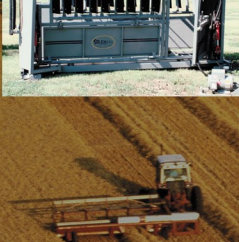
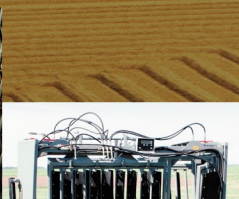




# Scale Systems

A BETTER WEIGH TO MEASURE FARMING PERFORMANCE



Truck Scale  
Weigh Bars®



Compression



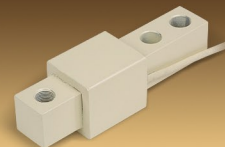
Axle



Bin/Hopper



Universal



Livestock



Hitch

WEIGH BARS · CANNISTER CELLS · TMR MIXER SCALES · GRAIN CART SCALES · TRUCK PLATFORM SCALES · BIN/HOPPER SCALES · YIELD CART SCALES · STATIONARY MIXER SCALES · ALLEY WEIGH SCALES · LIVESTOCK SQUEEZE CHUTE SCALES · GRASS SCALES · GRAIN CART SCALES · TRUCK PLATFORM SCALES · BIN/HOPPER SCALES · YIELD CART SCALES



# Weigh Bar<sup>®</sup>

## *The Best Weigh to Measure Farming Performance*

Avery Weigh-Tronix Weigh Bars are designed to withstand all the hazards of a farm environment. Environmental seals and coatings protect against rain, snow, dust and mud. Weigh Bars are engineered using finite element analysis and constructed to handle the toughest jobs. A wide range of indicators, remote displays, software and accessories are available for a complete weighing system. All these features add up to years of precise, trouble-free operation.

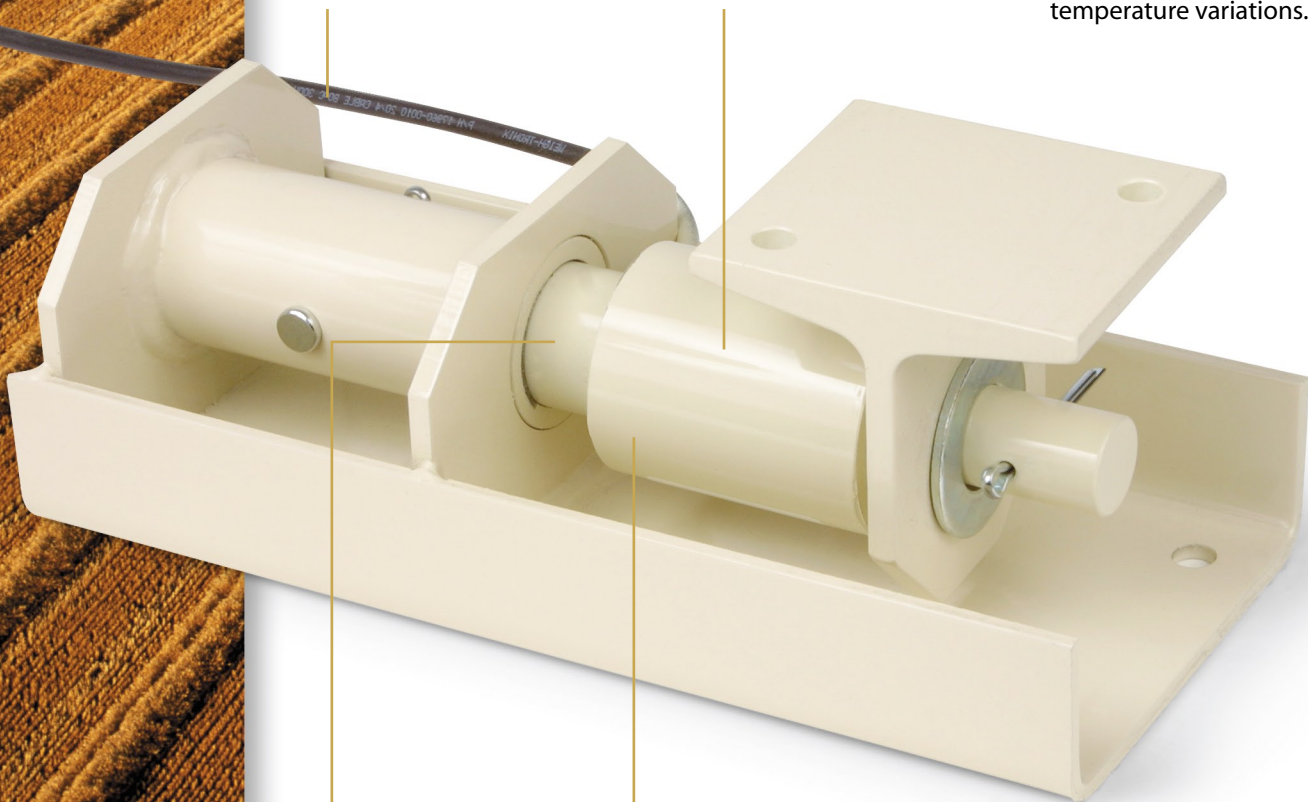
Avery Weigh-Tronix Weigh Bars are the obvious choice for superior weighing performance.

### Standard features on all Agricultural Weigh Bars

**Polyurethane sheathed cables** Maximum protection from moisture, lightning and physical damage.

**Steel potting shield**  
Protects against impacts better than plastic shields.

- **Optional temperature compensation**  
For inventory applications requiring accuracy with large temperature variations.



**Durable alloy steel construction** Handles extensive use for years of trouble-free service.

**Sealed strain gauges**  
Aerospace-developed sealing agent and industrial grade potting compound protect against the harsh agricultural environment.

- **Weigh Bar**  
The most reliable weight sensor in the industry.
- **3 year warranty**
- **Pre-calibrated**



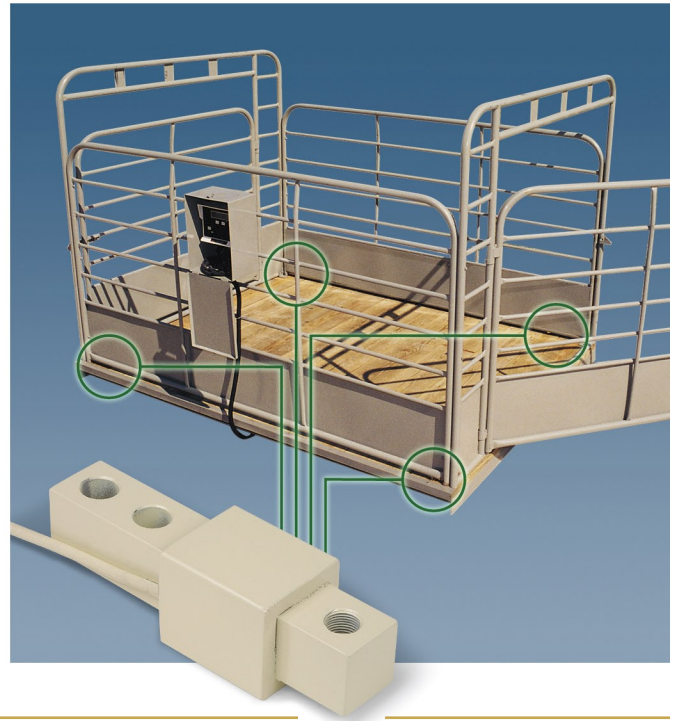
## Livestock & Platform Scales

Building a custom scale allows the design flexibility to fit any application.

Turn an existing pen into a livestock scale by bolting four Weigh Bars under it, and connecting them to an indicator. Livestock scales can be large enough for a group of animals or it can be built for a single animal. Place the scale in an alleyway or a loading area. Motion filtering is available on Avery Weigh-Tronix indicators, eliminating weight variations due to livestock moving around on the scale.

A platform scale is one of the easiest scales to build. Build a low-capacity platform scale for weighing carts of feed or a higher capacity scale for weighing wagons or single axles.

Weigh Bars are available in the right capacity for any farm scale application.



## Bin & Hopper Scales

Convert feed bins, tanks or hoppers into bulk scales. Weigh dry and liquid materials right in the containers eliminating hauling loads from storage to a scale. Know exactly how much feed is being consumed at regular intervals.

The system is easy to install. Set the Weigh Bars under the legs, level, bolt down and plug the connecting cables into a wide range of indicators or controllers. Interface batching systems to computers for a total data management system.

Capacities up to 200,000 lbs are available.



## Compression Load Cells

CC-30 and CC-50 load cells are typically used on larger capacity truck mounted applications. Simply place the load cells between the box and the frame. The load cells offer 0.1% accuracy, 30k or 50k capacity, temperature compensation and interchangeability with many competitive models.

Capacities up to 200,000 lbs are available.

# Weighing System

## Indicators & Remote Displays

Indicators and remote displays are integral to the operation of a Weigh Bar-based scale system. Most indicator models are available with an optional extra-large display. Complete features and specifications are available in the Scale Indicators literature.



*The compact size of the 640M makes it ideal for Grain Carts or TMR mixer applications where indicator is installed in truck or tractor cabs.*



*The entry-level 640 is well suited for collecting weighments when used on TMR mixers, grain carts, livestock scales, bins or general weighing.*



*The large 2 inch display on 640XL is ideal for easy viewing of weights from a distance, which is perfect for TMR mixers, Platform scales and Grain Cart applications.*



*Model 915 is ideal for automatic truck platform weighing, while 915A offers features for livestock weighing by collecting animal weighments.*



*1040/XL is a programmable recipe indicator for TMR batching. It offers an intermediate level of features with record keeping for feeders and managers.*



*2040/XL is the high end TMR batching indicator. Partnered with the Feed Supervisor Software, creates a complete TMR Feed management solution for progressive dairies.*



*RD40XL remote display has a large 2 inch display and optional wireless remote control feature, making it an ideal option to the 640 series for TMR mixers/platform scales.*



*RD64/XL offer wireless ingredient advance, making them ideal additions to the 1040/2040 series for TMR mixer applications. Step-up to a 2 inch display on RD64XL.*



*The compact RD40/RD64M are perfect mirror mount remote displays for truck mounted TMR mixers. Assists feeder during the unloading process when teamed with an indicator.*



*The wireless RD40RF with its compact size, allows the feeder to view and control loading in a TMR mixer application right inside the loader cab.*

## Printers

A wide range of tape and ticket printers are available to provide a hard copy of your scale data.



*The WP-233 tape printer is available as desktop, panel-mount or housed in a waterproof NEMA 4X case. Features a reliable dot-matrix print head.*



*The versatile TM-295 ticket printer is the world's smallest package slip printer. It provides fast and reliable performance.*



*The Transfer Data Module (TDM-40) provides a low-cost alternative to transfer data collected from any scale indicator to a PC.*



*Transfer Data Software (TDS-1040) provides an economical feed management system for TMR mixers.*

## Transfer Data System

The Transfer Data System (TDS) provides a simple, reliable method of transferring data between a scale and PC for storage and analysis.



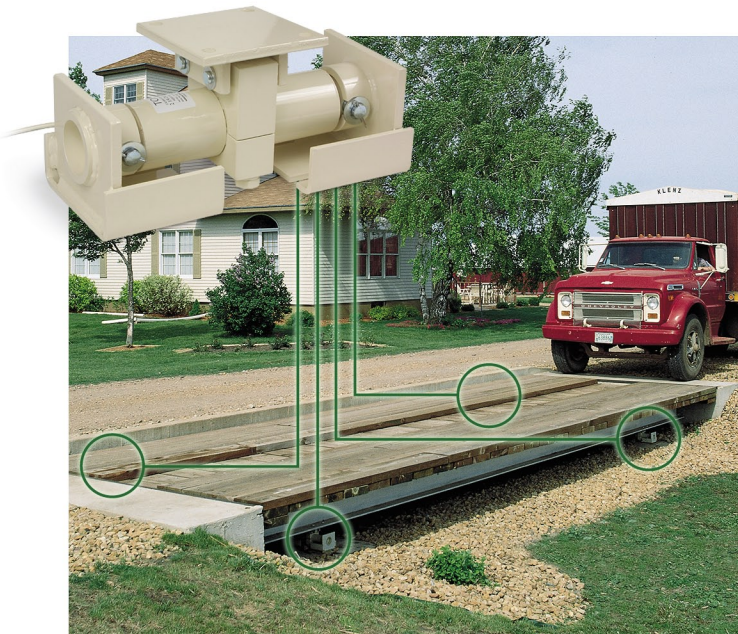
## Truck Scales

An on-farm truck scale will save money in several ways: Verify incoming delivery weights, pre-check weights going out to the elevator or check grain yields to compare performance of different seeds, fields or fertilizers—and not worry about getting a ticket for an over-loaded truck.

A truck scale kit consists of four or eight Weigh Bars with cables and brackets. (Indicators sold separately).

Construction materials can be purchased locally to build an economical farm weighing system.

Capacities up to 200,000 lbs are available.



## Three-point Scale System

Three-point scale kits turn an existing feed mixer, grain or hog cart into a powerful portable scale.

A standard two wheel axle scale system consists of one hitch Weigh Bar and two axle Weigh Bars. Avery Weigh-Tronix offers axle bars to match many popular hub sizes.

Indicators feature a mounting bracket that attaches to any surface. Install on equipment or inside tractor cab for easy viewing.

Capacities up to 100,000 lbs are available.

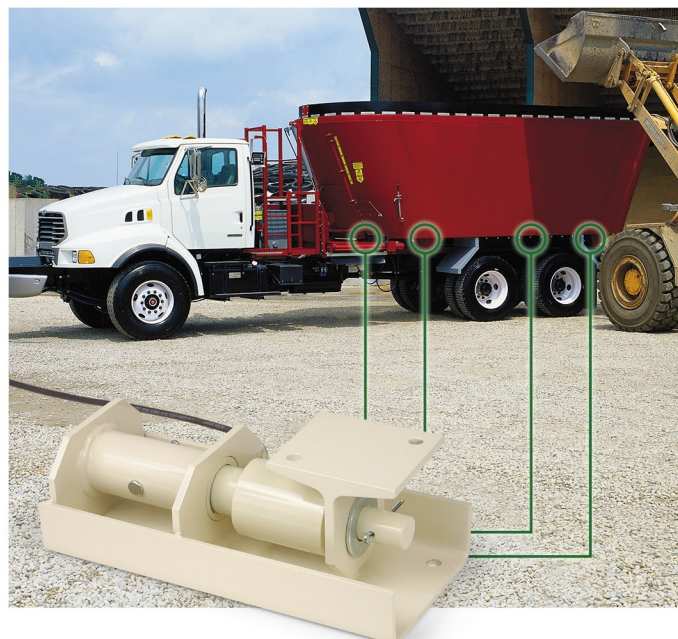


## Four-point Scale System

The four-point scale system installs under TMR mixers, tanks, or other bodies mounted on a trailer chassis or truck frame.

Weigh Bars are placed between the subframe and box or other type of load container. Cables attach to an indicator situated at a spot most convenient to the operator. A cab-mount indicator with external remote display is a useful option.

Capacities up to 80,000 lbs are available.





# Avery Weigh-Tronix *Serving the Agricultural Industry*

## *Scale Solutions for Demanding Applications*

Avery Weigh-Tronix provides quality weight-based solutions to demanding agricultural applications - TMR mixers, grain carts, livestock, bin and truck scales, squeeze chutes, weigh wagons, grinder /mixers, cotton buggy, catfish feeding, logging and the list goes on. The Avery Weigh-Tronix engineering team always has the farming environment in mind as they take a design from concept to finished product. Every day, agricultural producers harvest benefits from the legendary scale performance whether indoors or outdoor, stationary or mobile. Our products have stood the test of time on thousands of farms and are ready to handle any environment.

## *Worldwide Leader and Technology Innovator*

Avery Weigh-Tronix is a technology developer and manufacturer of weighing products and systems for customers with rapidly changing needs. Avery Weigh-Tronix entered the marketplace in time to help guide the weighing industry from mechanical to electronic technology. The introduction of the Weigh Bar® weight sensor and the early use of the microprocessor as a key component of weighing instrumentation marked the company as a leader in the development of technological solutions for customer requirements.



For over thirty-five years the company has accomplished consistent, strategic growth with the goal of becoming the preeminent supplier of weighing technology for stand alone and systems applications. Some of the reasons for marked growth of the company: innovative products, customer commitment, continuous process improvement and people.



## *Quality Products and Services*

Continuous process improvement has powered the growth of Avery Weigh-Tronix and influences every detail of the way we do business. Our entire work force helps create effective solutions to challenges in manufacturing, scheduling, cost containment and delivery.

Avery Weigh-Tronix is a member of the world community in which ISO 9001 has become a recognized standard of business operation to a growing number of our customers. It requires disciplined attention to detail, careful documentation of processes, and continuous checks against variation in product or procedure. These are business practices that the world marketplace values and insists upon. These are business practices that we are happy to offer you, our customers.

## *Customer Commitment*

The Avery Weigh-Tronix engineering, sales, manufacturing and service team proudly contributes to the successes of agribusiness and are committed to customer satisfaction. For more information and details on all products, visit [www.ag scales.com](http://www.ag scales.com).



### **Avery Weigh-Tronix**

1000 Armstrong Dr.  
Fairmont, MN 56031 USA  
Telephone: 507-238-4461  
Facsimile: 507-238-8283  
e-mail: [ag@weigh-tronix.com](mailto:ag@weigh-tronix.com)  
[www.ag scales.com](http://www.ag scales.com)



**Avery Weigh-Tronix**  
SCALES FOR AGRIBUSINESS