

TMR PC OPERATION

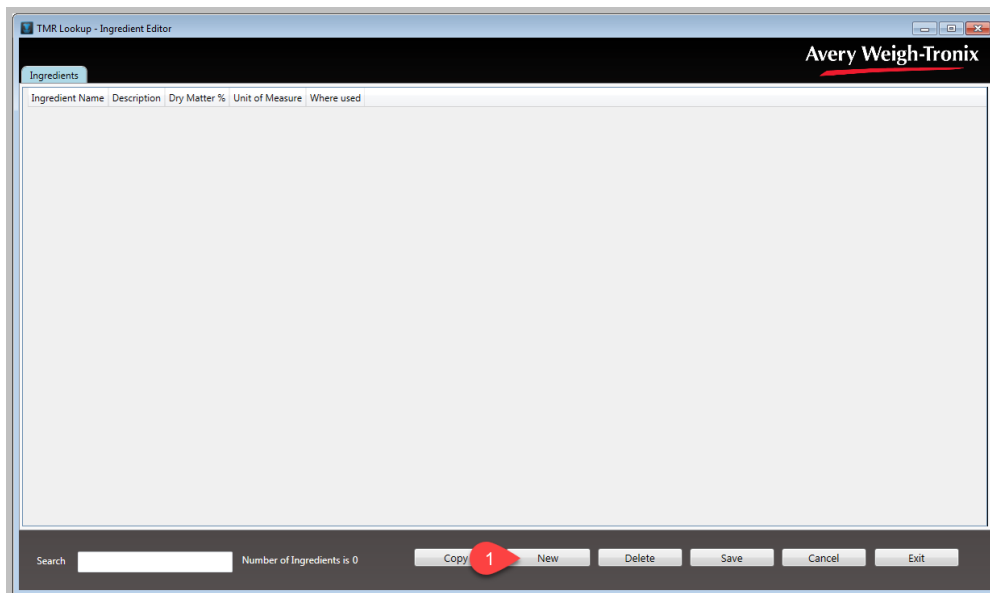
Quick User Guide

Begin in the software suite to fully utilize your TMR system.

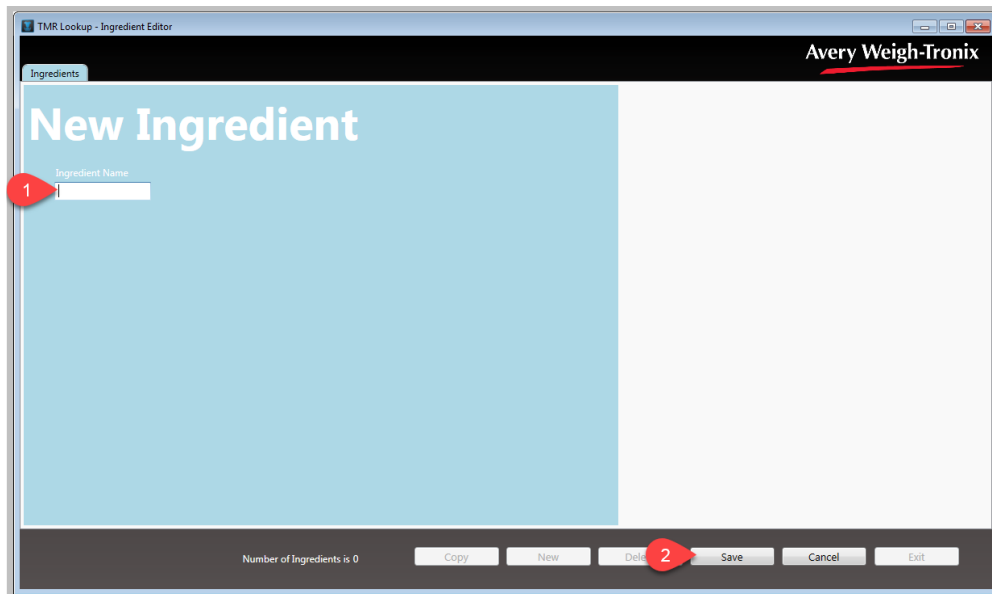
Click on Ingredients. It will bring you to the “Ingredient Editor” screen:



Start by clicking “New.”

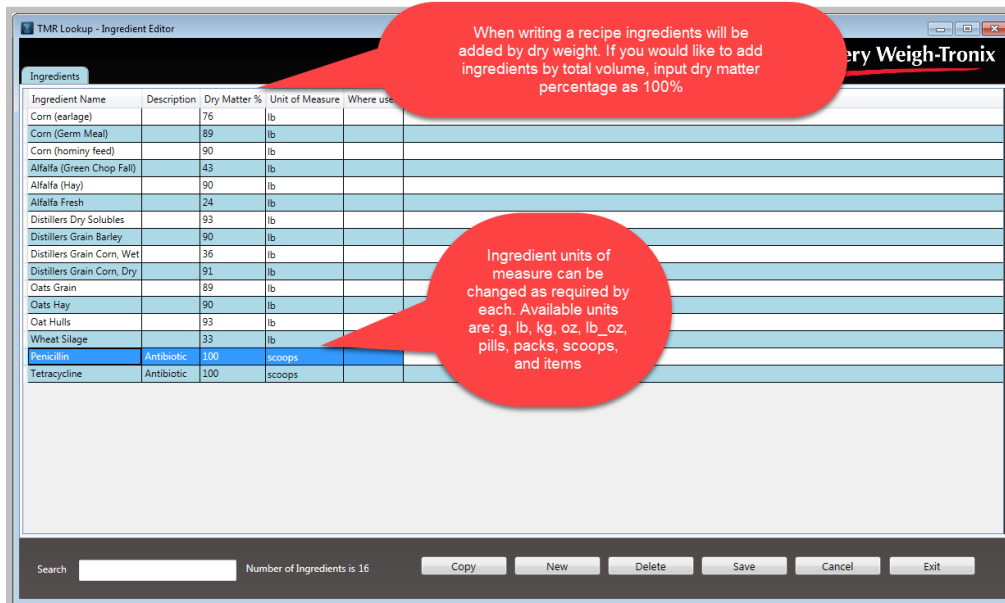


Enter the name of the first ingredient that you would like to create. Then click “Save.”



Repeat these steps until you have created all the ingredients that you will need. This screen can be accessed at any time to add additional ingredients.

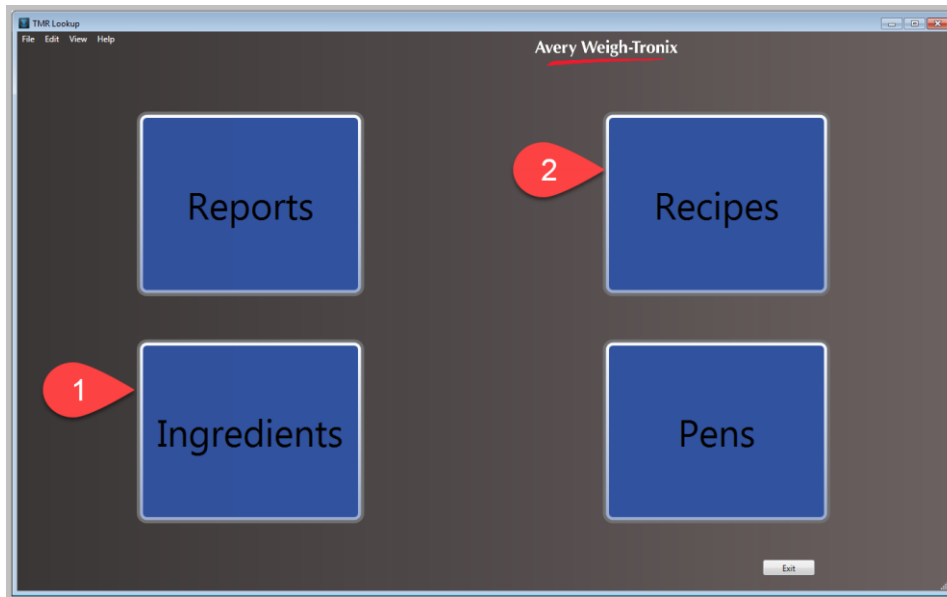
Dry Matter % and Unit of Measure:



Dry Matter Percentages and Unit of Measure can be changed at any time. When you change the dry matter percentage, any recipes including that ingredient will update the new total volume requirement of that ingredient.

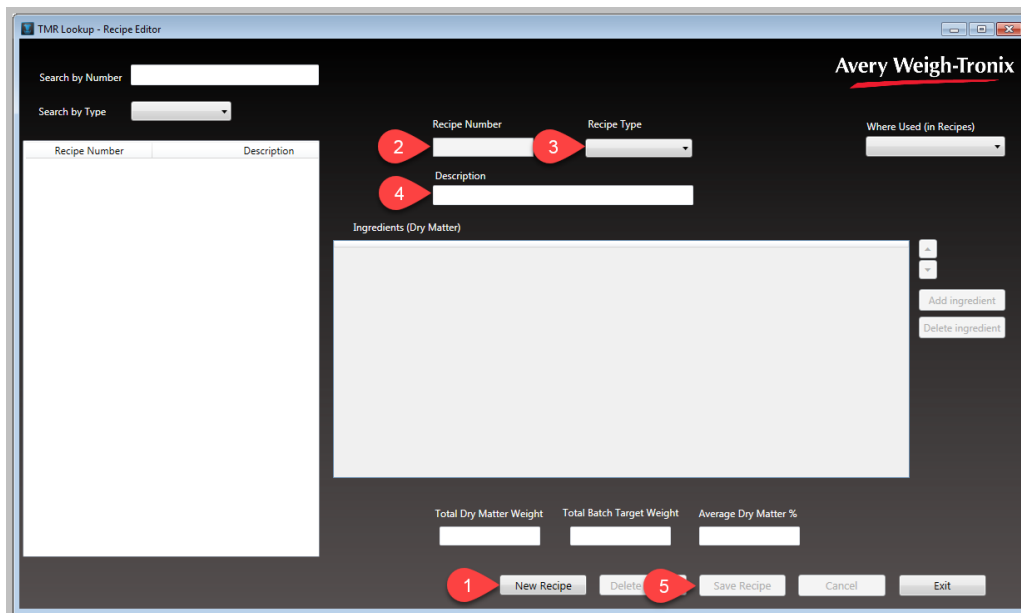
Recipes:

Start by Clicking “Recipes”

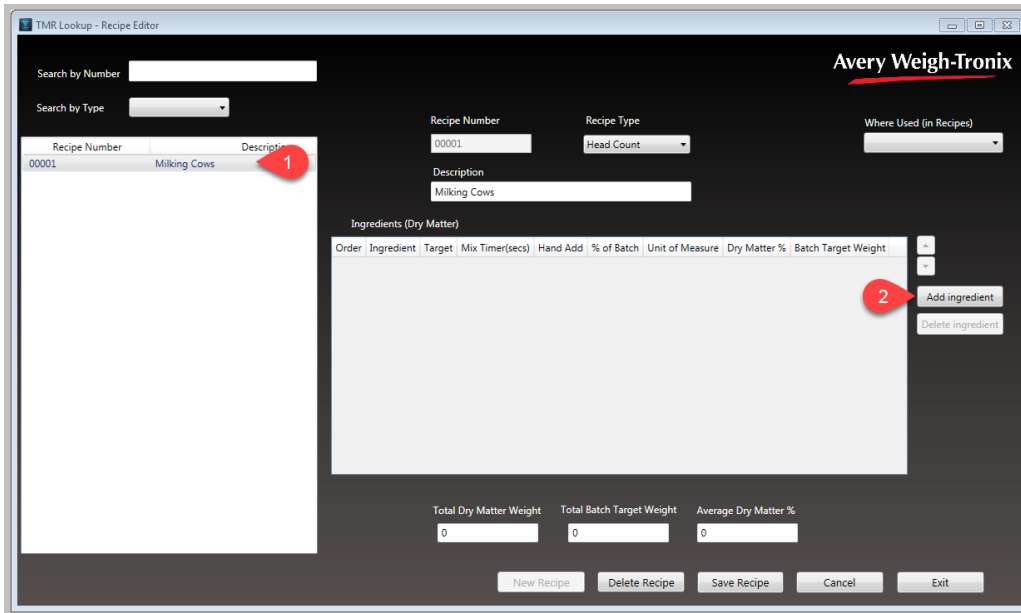


Building Recipes:

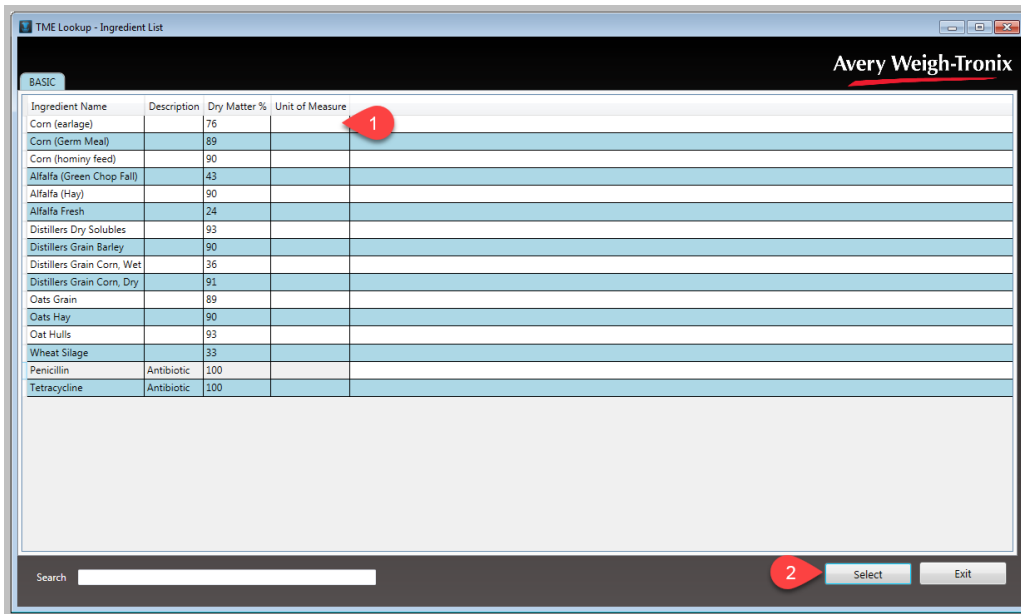
Click New Recipe. Number the recipe. Indicate how you would like the recipe to ration feed. Then fill in the description.



Select the recipe that you would like to build or edit and click “Add ingredient.”



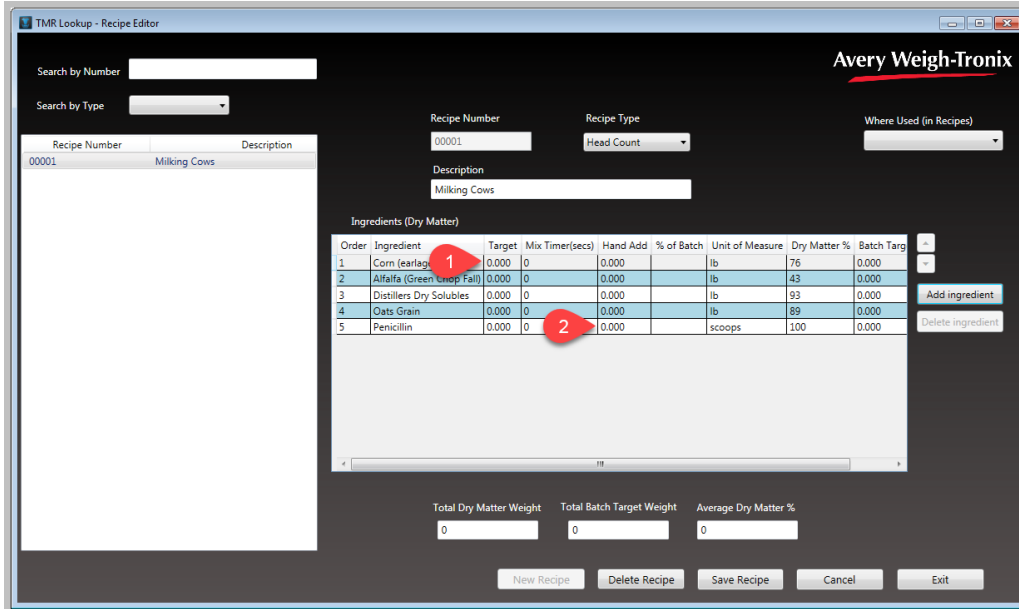
Highlight each of the ingredients, one at a time. Then click “Select” to confirm.



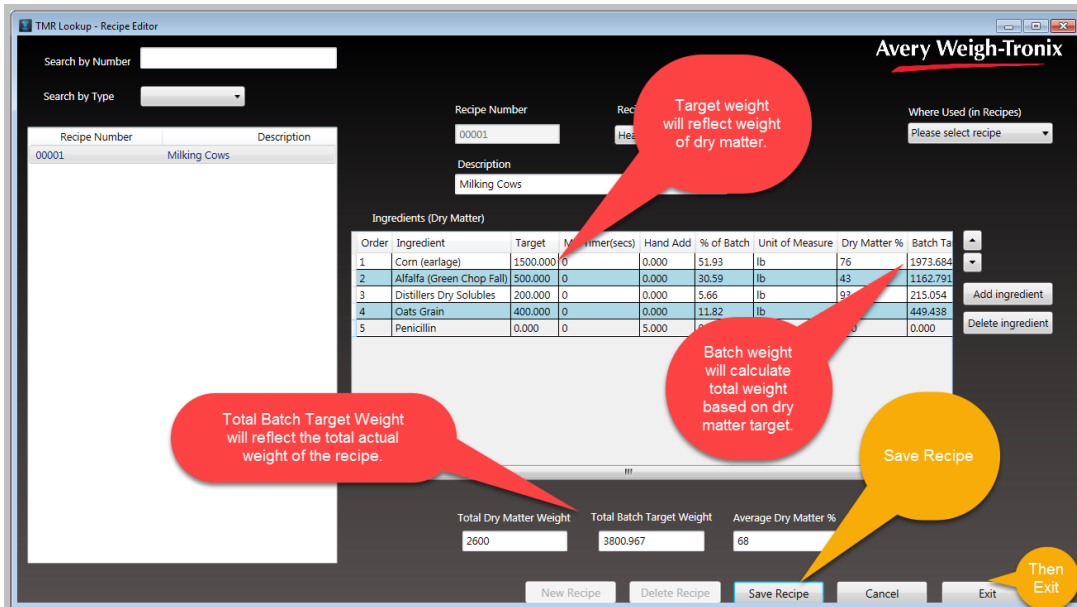
After you have added all of the ingredients that you need, click “Exit” to leave the “Ingredient List” page.

“Recipe Editor” screen

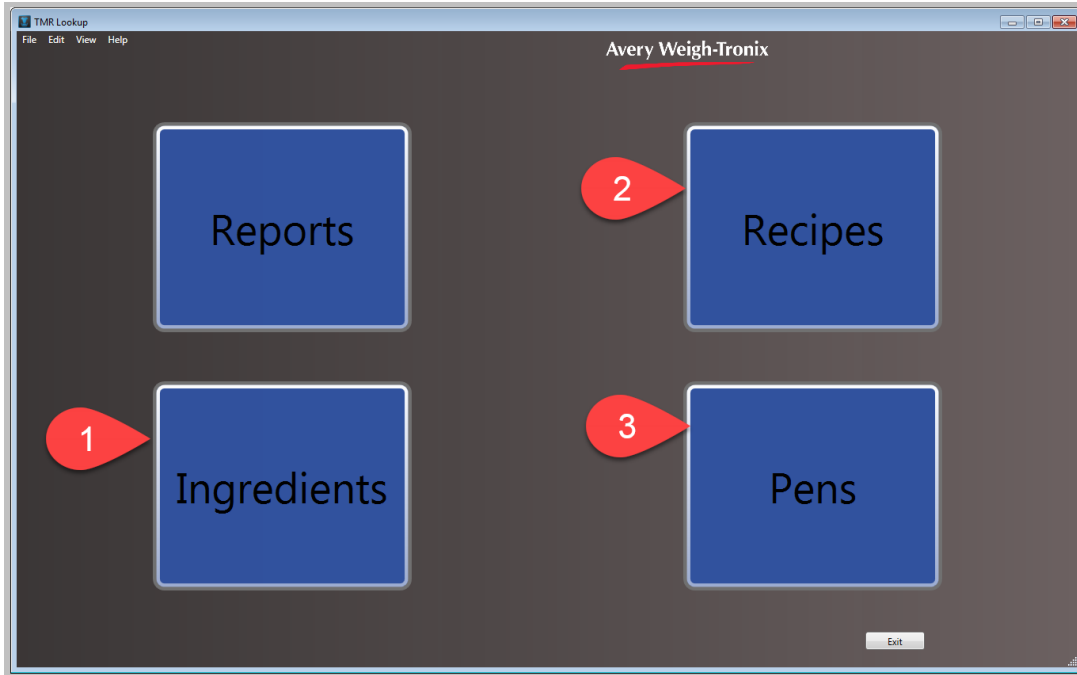
Select and edit the target quantities of each ingredient according to the selected unit. Targets will be added according to the “Dry Matter %”. If you would like for TMR to make entered weight the actual target weight, input the dry matter as 100%.



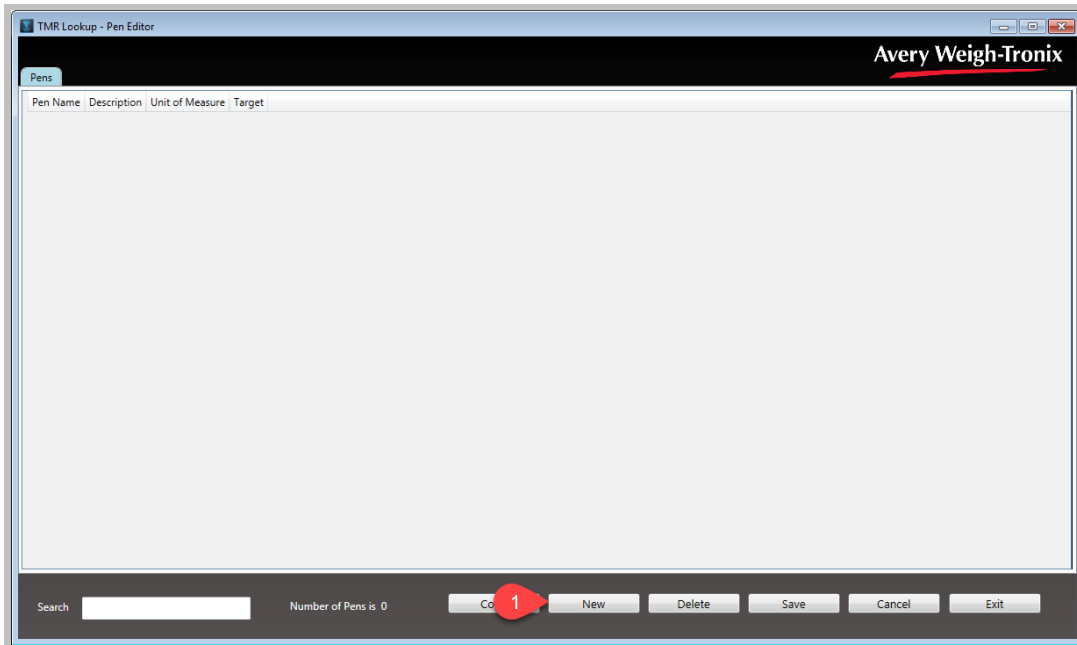
Review/Save Recipe



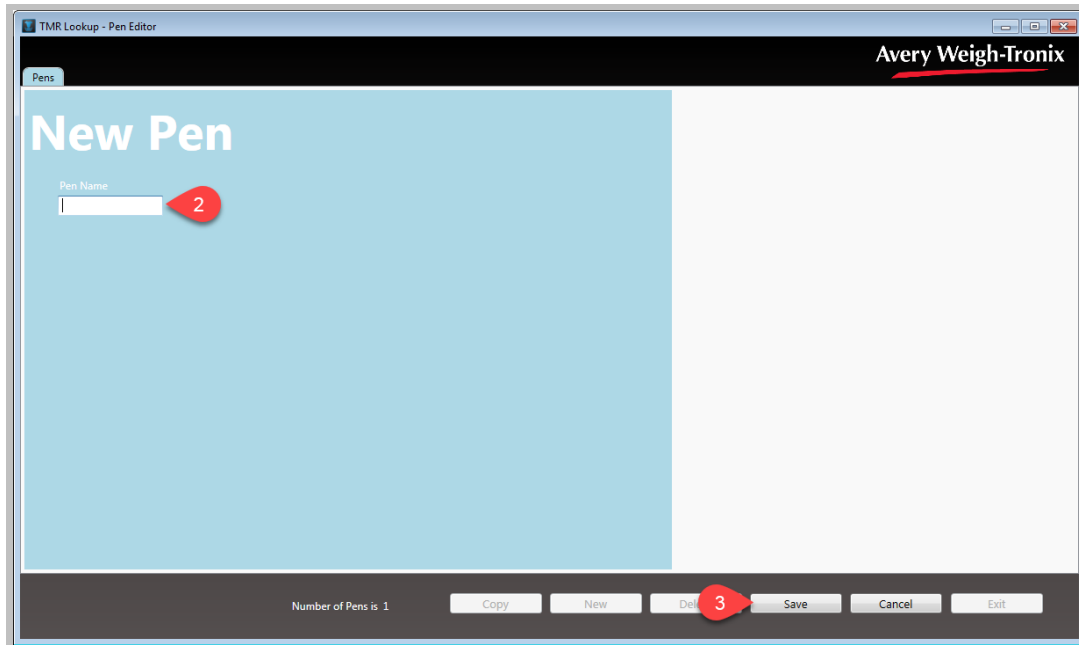
The last item to cover before heading to the scale is “Pens”. Click “Pens”.



Step 1: Click “New”



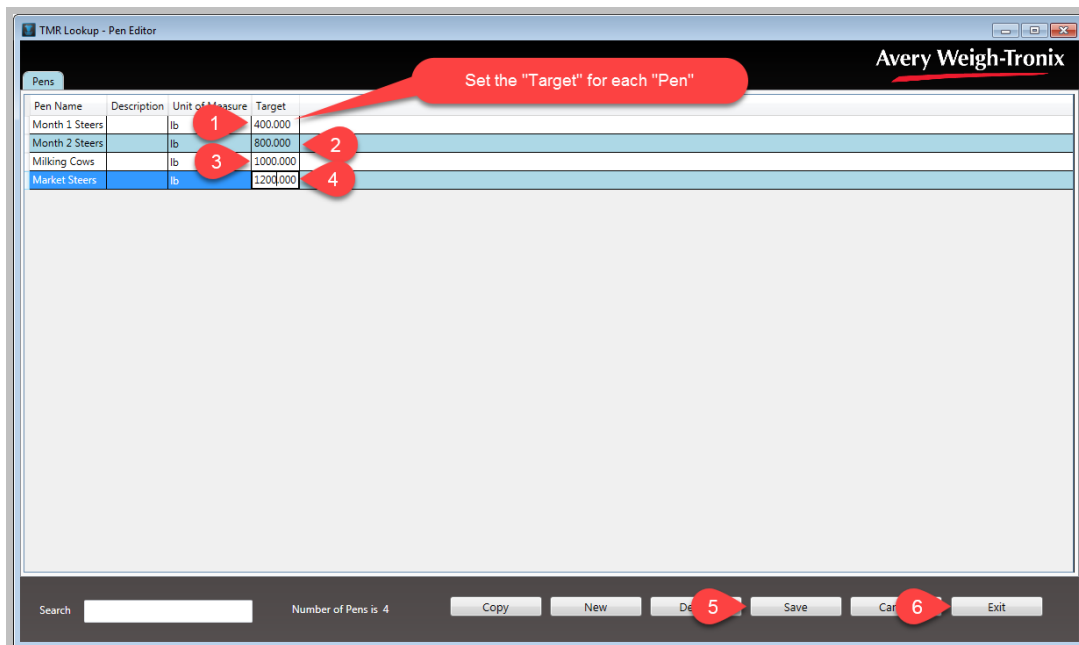
Steps 2 and 3: Name the “Pen” and “Save”



Repeat Steps 1 through 3 for all of your pens. New “Pens” can be added at any time.

Set the “Targets” for all of the “Pens”:

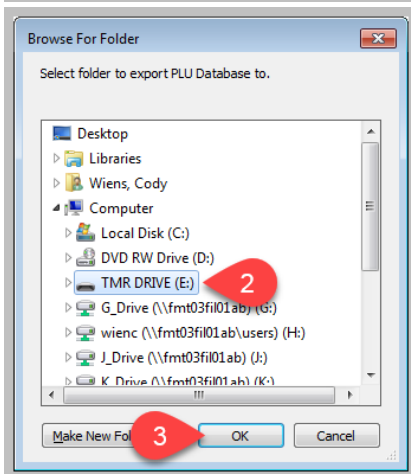
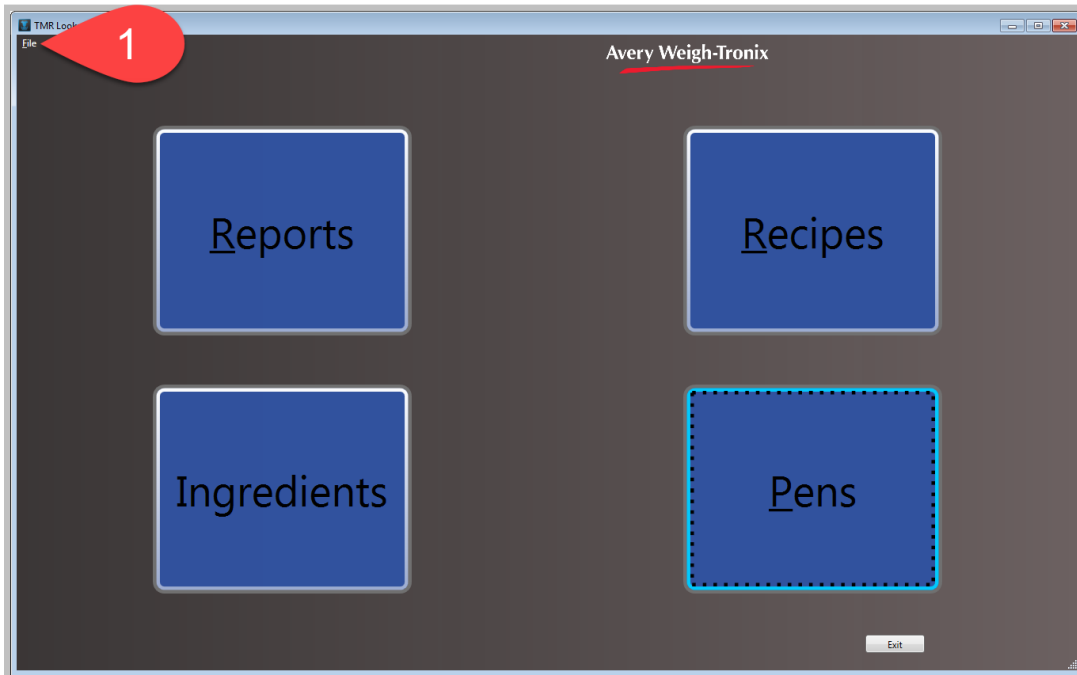
Then “Save” and “Exit” to return to the Main Menu.



Exporting the Database for use in the scale:

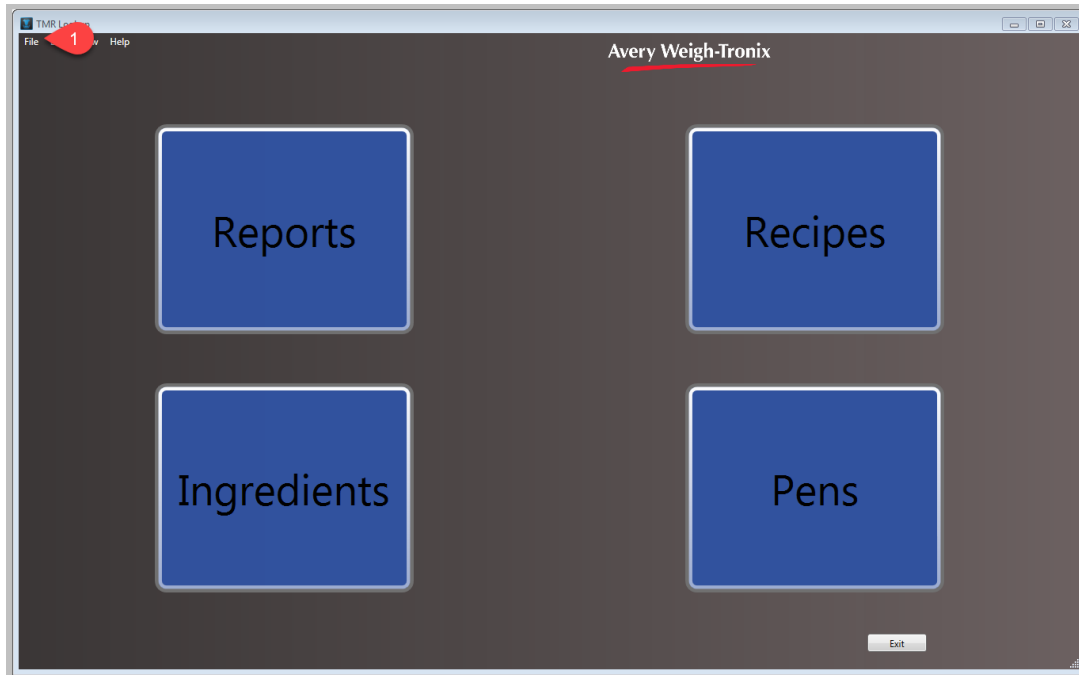
Ensure that your TMR USB Flash Drive is properly inserted

Click on “File”, then on “Export Database”. This will open another window (as seen below). Select/Highlight the TMR Drive, and click OK

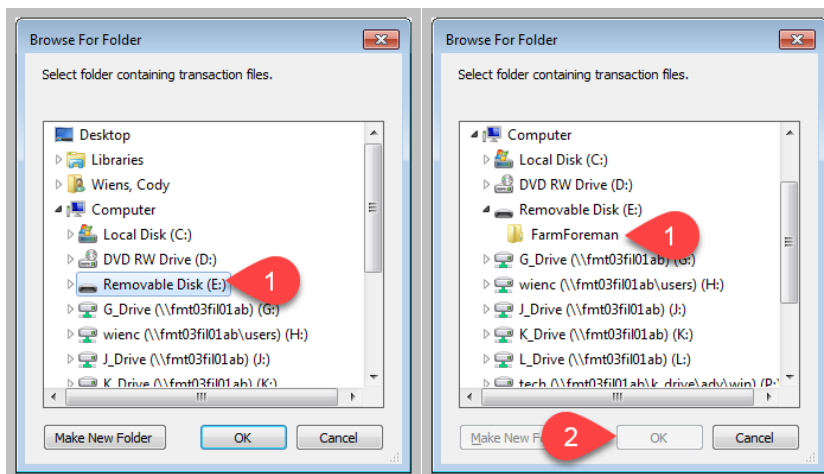


Remove the USB drive and insert it into the scale indicator. Perform feeding operations and export transactions. Remove the USB drive from the scale indicator. Then insert it into the computer and choose Import Transactions.

Importing Transactions

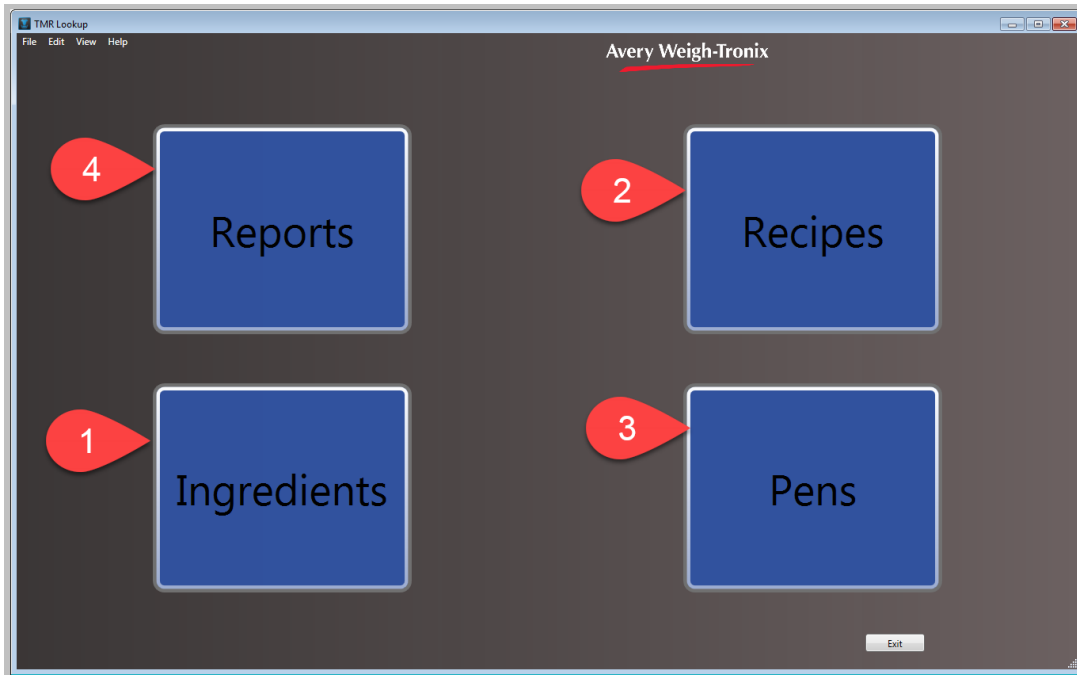


Under “Files” click “Import Transactions” which will open a “Browse For Folder” window that looks like this:

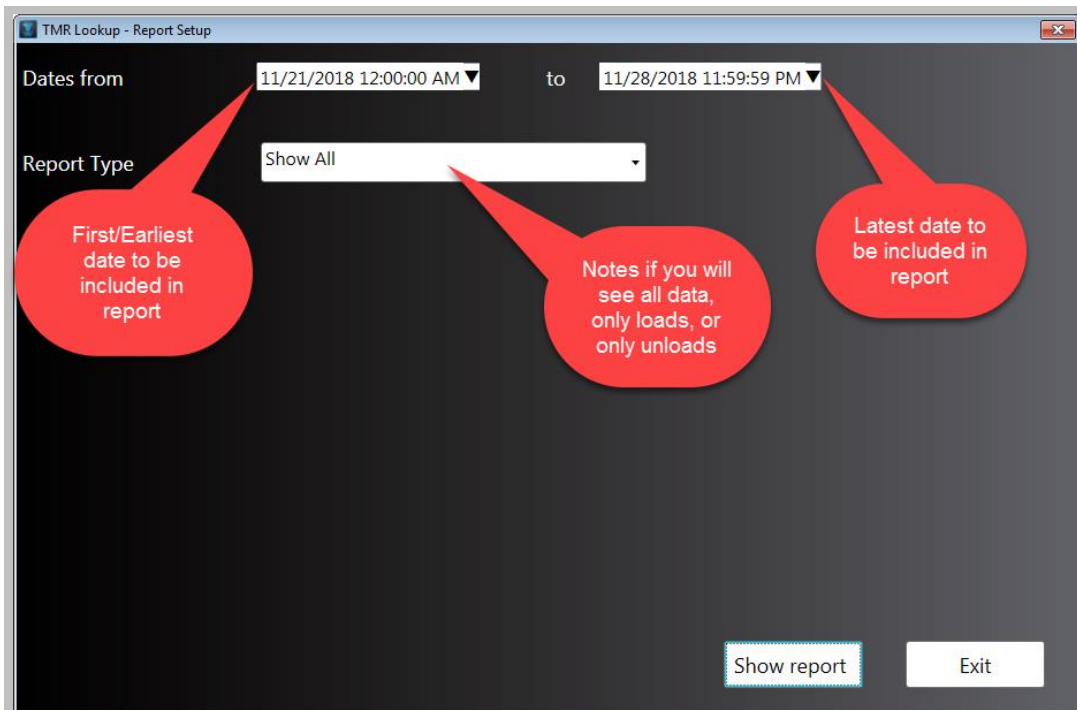


As shown above, click on your removable drive, and click on the “FarmForeman” Folder then click “OK”.

Reports:



Report Options:



How the report will look.

Transaction Report From: 11/21/2018 12:00:00 AM To: 11/28/2018 11:59:59 PM

ALL ALL

Type	Recipe	Ingredient/Pan	Target Weight	Batch Target Weight	Actual weight	Hand Add	Units	User	Serial	Date
LOAD	0003	Corn (earlage)	6	6	6	0	lb		151250439	11/27/2018 8:37:27 PM
LOAD	0003	Alfalfa (Green Chop Fat)	4	6	51	0	lb		151250439	11/27/2018 8:37:33 PM
LOAD	0003	Distillers Dry Solubles	4	4	54	0	lb		151250439	11/27/2018 8:37:40 PM
LOAD	0003	Oats Gran	4	4	54	0	lb		151250439	11/27/2018 8:37:44 PM
LOAD	0003	Wheat Stlage	4	14	54	0	lb		151250439	11/27/2018 8:37:53 PM
LOAD	0003	Penicilin	0	0	3	3	scoops		151250439	11/27/2018 8:37:58 PM
LOAD	0003	Corn (earlage)	360	474	488	0	lb		151250439	11/27/2018 8:38:31 PM
LOAD	0003	Alfalfa (Green Chop Fat)	180	418	428	0	lb		151250439	11/27/2018 8:38:40 PM
LOAD	0003	Distillers Dry Solubles	240	258	260	0	lb		151250439	11/27/2018 8:38:51 PM
LOAD	0003	Oats Gran	210	236	238	0	lb		151250439	11/27/2018 8:39:00 PM
LOAD	0003	Wheat Stlage	270	818	826	0	lb		151250439	11/27/2018 8:39:10 PM

Report printed on: 11/28/2018 3:00:15 PM Page: 1